

**Meanwood  
Neighbourhood Improvement Plan**



**Leeds**  
CITY COUNCIL

**2011-12**

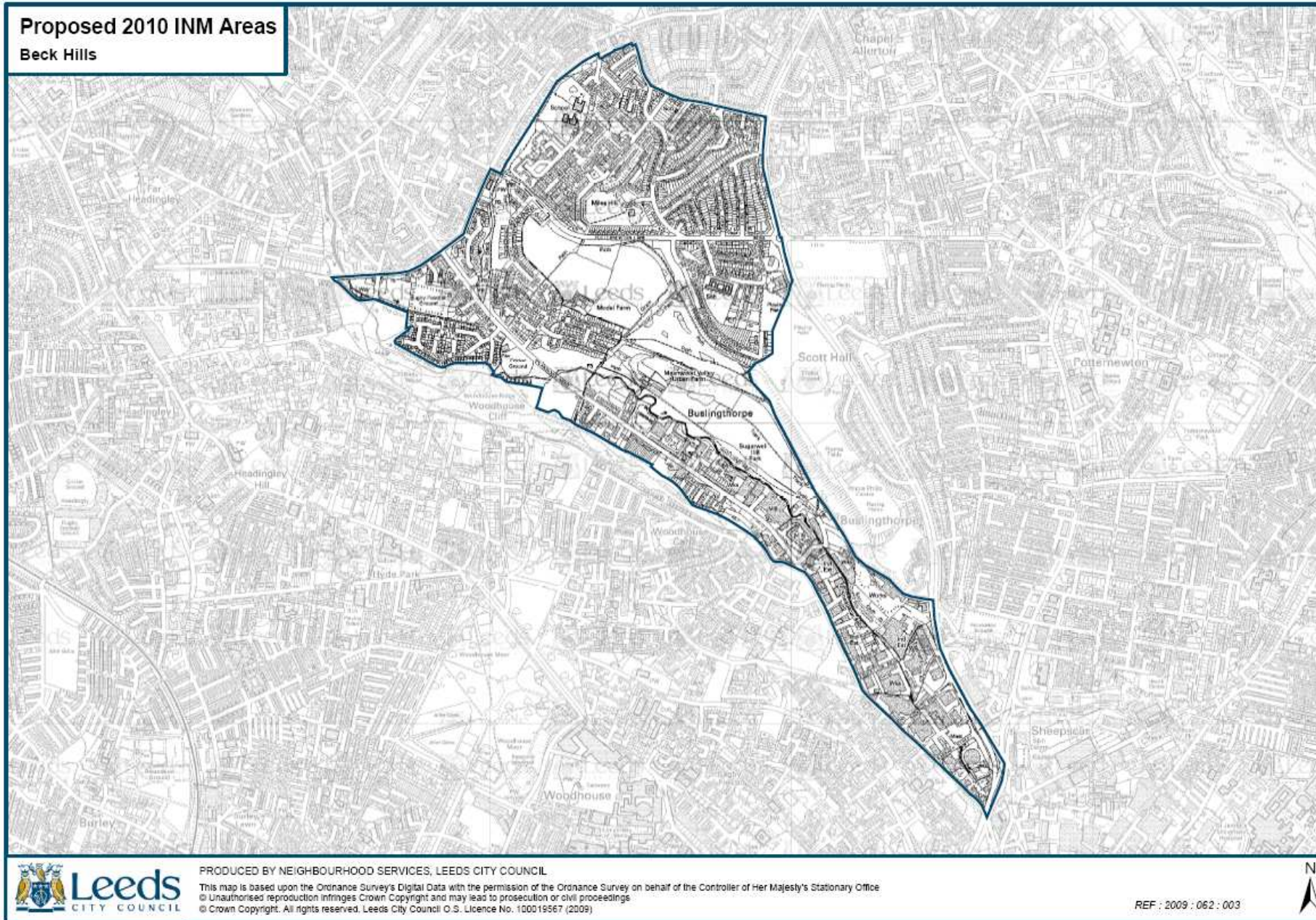
**East & North East Area Management Team**

Contact: Steve Lake  
0113 336 7634  
[Steve.Lake@leeds.gov.uk](mailto:Steve.Lake@leeds.gov.uk)

## Contents

Map of the Meanwood Priority Neighbourhood	Page - 3
Summary of Neighbourhood Index Comparisons	Page - 5
Summary of Neighbourhood Index Domains 2010	Page - 7
Summary of Resident Perception Surveys – Key issues highlighted	Page - 9
Additional data for key issues as above identifying details both spatially and thematically.	Page - 9
Summary of priorities for financial year	Page - 10
Action Plan – Not included as awaiting agreement of the priorities	Page -
Appendix 1 – Statistical analysis	Page - 15
Appendix 2 – Neighbourhood management structure diagram	Page - 26

## Map of Meanwood Priority Neighbourhood



## **Introduction – Meanwood Priority Neighbourhood**

The Meanwood Priority Neighbourhood is made up of the Meanwood 6 estates MSOA area although has been increased to include the nearby Stonegate estate which falls into an adjacent ward and MSOA area. It is bounded to the east by Scott hall road, to the North Stainbeck Lane and Road (excepting the Stonegate area) before cutting along Woodhouse Cliffe and down through Buslingthorpe. The major estates within this neighbourhood are the Miles Hills, Beckhills, Potternewtons, Farm Hills, Sugarwells, Boothroyds and Stonegates.

Demographically, the area is becoming more diverse ethnically with 77.86% of the population being White British 5.14% Black Caribbean and 2.44% of Pakistani origin. Faith wise 60.74% of the population Christian and 3.68% Muslim. The population of this neighbourhood is also considerably younger than would be expected with 20.50% children and 50.84% under the age of 30.

33.5% of households within this area are in owner occupation and 50% rent from the local authority. Terraced housing accounts for 30% of the total housing stock and semi detached for a further 36% and 20% of stock is flat accommodation. 74% of the properties are classified as council tax band A.

### **Team Meanwood Delivery Groups**

Community Leadership Team – This will be made up of representatives of the local community and should include Parent Governors from local schools, Representatives from local recognised TRA's, and the local business community and potentially elected community champions. This meeting would be chaired by a local elected member and the group would meet 4 times per year. The general purpose of this meeting would be to oversee the development of the Neighbourhood Improvement Plan in particular around identifying local priorities that require action, helping to measure the success of interventions and crucially to take a lead in communicating to the wider community what activities are taking place and what improvement are being made in the local area. This should improve public awareness in the partnership and ensure that it becomes responsive to public needs.

Local Management Team – This will be made up of local service providers and chaired by the Neighbourhood Manager. This group will work with the Neighbourhood Improvement Plan and drive forward operational improvements in the priority neighbourhood. Members of this group will be selected from local service providers and it is recommended that members of this group cannot also be members of the Community Leadership Team as this could create a conflict of interests.

Inner NE Area Committee – This will provide a strategic reporting mechanism for the Neighbourhood Management project and will assist in ensuring the buy in of partner agencies and signing off the project and NIP for a twelve month period. The Area Committee will receive 6 monthly progress reports on the status of the project and an annual assessment and comparison of statistics alongside each years NIP.

## **Breakdown and Assessment of Neighbourhood Index Comparison**

### **Economic Activity**

This has remained static at 15<sup>th</sup> in the city although there has been a slight improvement in the overall score of 6.26. This is made up of significant reductions in the numbers claiming Job Seekers Allowance (JSA) and Lone Parent Income Support with Incapacity Benefits the only one showing a very slight deterioration.

### **Low Income**

This has continued to show improvement overall in the ranking moving from 19<sup>th</sup> to 21<sup>st</sup> overall however the score overall has shown a slight deterioration with a decrease of 4.13. The largest deterioration has come in the Households receiving in work benefits which has increased by 35 and Children in Workless Households which has increased by 22. There have been positives in this area however with both 60+ Households in receipt of benefits and Court Payment orders seeing improvements (21 and 45 less respectively) but this area remains a priority for 2012-13

### **Health**

Health has seen the second largest improvement since 2011-12 rising 15 places to 22<sup>nd</sup> in the city with a score increase of 16.84. Improvements have been seen across all the sub domains with particular significant results in Low Birthweight and Circulatory disease mortality.

### **Environment**

This has seen the largest rank improvement within Meanwood rising 17 places from 14<sup>th</sup> to 31<sup>st</sup> with a score increase of 19.47. Improvements are again evident on all the sub-domains with particular improvements in fly tipping (118 less incidents) and graffiti (18 less, nearly a 50% reduction). This is now scoring higher than the city average which is marked improvement and needs to be maintained which given the waste issues remaining static would seem to be achievable.

### **Education**

This domain has also seen a significant improvement in the rankings rising 12 places from 17<sup>th</sup> to 29<sup>th</sup> overall. Within the sub domains the major improvements are around Persistent Absenteeism (falling from 12.81% to 9.84%) and Key Stage 2 attainment rising from 52.31% to 68.35%. There have also been some deteriorations with the most significant being NEET's which has dropped from 10.15% to 12.98% .

### **Community Safety**

Community Safety in this area has got significantly worse according to these figures with the ranking dropping from 28<sup>th</sup> to 18<sup>th</sup> across the city. The worst single performing area has been acquisitive crime (91 more offences) and Community Disorders (76 more offences) but also environmental crimes (damage to property) have also got worse.

## **Housing**

This domain has seen a significant statistical fall in ranking of 16 places from 44<sup>th</sup> to 28<sup>th</sup>. The sub domains indicate a deterioration across the board with particular decreases in Empty homes and Housing turnover with a drop in Purchase price of £19, 257 taking it back to a 2009 figure.

DRAFT

## **Neighbourhood Index 2010 Assessment**

### **Economic Activity**

This domain remains a primary concern within Meanwood despite recent improvements and is also the lowest of the overall indicators. All the sub domains are well above the Leeds average, indeed almost double in most instances. Particular sub domains requiring attention are levels of incapacity benefit (10.88% compared to 5.9%) and Lone parent income support (4.05% compared to 1.67%) with JSA also high at 7.92% (compared to 4.34%).

### **Low Income**

As with the previous domain, this remains a significant issue within Meanwood with all aspects significantly higher than the Leeds average. In particular Children in workless households (37.58% compared to 18.88%) and households receiving in work benefits (9.16% compared to 4.85%).

### **Health**

This is currently ranked 22<sup>nd</sup> in the city having seen a recent improvement. The major sub domain impacting here remains Cancer mortality (153.53 per thousand compared to 117.74), circulatory disease mortality is also an issue (122.44 per thousand compared to 79.13). Low birth weights are also higher here than the Leeds average but not with the same statistical significance.

### **Environment**

This domain is now above the city average rising to 31<sup>st</sup> in the city. This does not make it any less of a priority however the challenge being to ensure the improvements continue and improve. The major sub domains to target will continue to be waste issues and fly tipping as these are the areas with the highest returns.

### **Education**

This domain is ranked 29<sup>th</sup> in the city and many of the sub domains are worse however not by a large margin. Foundation Stage attainment stands at 47.25%, Leeds being 52.49, KS2 attainment is 68.35% with Leeds 73.09% with only KS4 showing a large discrepancy with a rate of 33.33% compared to Leeds average 50.16%. The Persistent Absenteeism is higher than the city average at 9.84% compared to 7.60% while NEETs are significantly higher at 12.98% compared to Leeds 7.58%.

### **Community Safety**

This is the second lowest domain in the index for this neighbourhood ranked at 18<sup>th</sup> across the city. The major factors here are Community Disorders at 744 and acquisitive property crime which need to remain priorities for the next twelve months.

## **Housing**

This domain is ranked at 28<sup>th</sup> after a recent decrease as outlined above. The major sub domains within this are average purchase price which is nearly £50K lower than the Leeds average and empty homes which is 230. It is likely that the clearance taking place in this area will have impacted heavily on this latter domain as well as that around housing turnover.

DRAFT



## **Breakdown and assessment of Community Perception Survey**

This is a two year piece of work conducted by ENEHL so has not altered since 2010. The major community issues within the Meanwood neighbourhood relate to Noisy neighbours (34%) and rubbish and litter (30%) closely followed by Vandalism or graffiti (27%) and disruptive young people (24%) with drug dealing or use (21%). This clearly identifies that the major concerns in this locality continue to be based around the Crime and Environmental agendas.

In examining the illustrations detailing all responses however there is significant differences appearing within this. Litter and rubbish is clearly an issue however to approx three quarters of the respondents it is not so it could be considered that there are lines of demarcation within Meanwood where issues are more severe than others and that there has been a recent improvement. This is mirrored in the feedback relating to Disruptive Young people (not an issue for over 75% of the respondents) and drug use / dealing which again would both indicate a spatial variation and improvements that have taken place. Noisy neighbours however appears to be more of an all round issue from this regard with a more balanced graph indicating this.

## **Crime Statistics Breakdown and Assessment**

In both the Stonegate and Chapel Allerton (CA) areas of Meanwood the indicators are positive despite the set backs indicated from the Neighbourhood Index. In all, Crime is reducing and, although there is some uncertainty at this stage around ASB in the Stonegates, the results in CA are very positive and the work is now being developed further around the Challenge and Support links to school clusters and attendance to make further reductions over the next twelve months.

Crime wise consideration must also be given to the large clearance area within the Beckhill estate. This has been damaged considerably and there have been numerous thefts of metalwork and other assorted items from the void properties which is would be expected to have had a severe detrimental effect on the crime statistics so to see a further and continued decrease is a significant positive.

## **Identified Priorities**

- 1. Continue to improve the environment, in particular fly tipping, and waste issues.**
- 2. Continue to improve the Community safety aspects, in particular relating to acquisitive crimes and community disorders**
- 3. Reduce the NEET and Persistent Absenteeism rates**
- 4. Increasing engagement and involvement in with vulnerable families in Meanwood**
- 7. Maintain and improve wellbeing in middle aged and older adults**
- 5. Reduce the Incapacity and JSA claimaints in this area**
- 6. Improve community engagement and volunteering opportunities within Meanwood.**

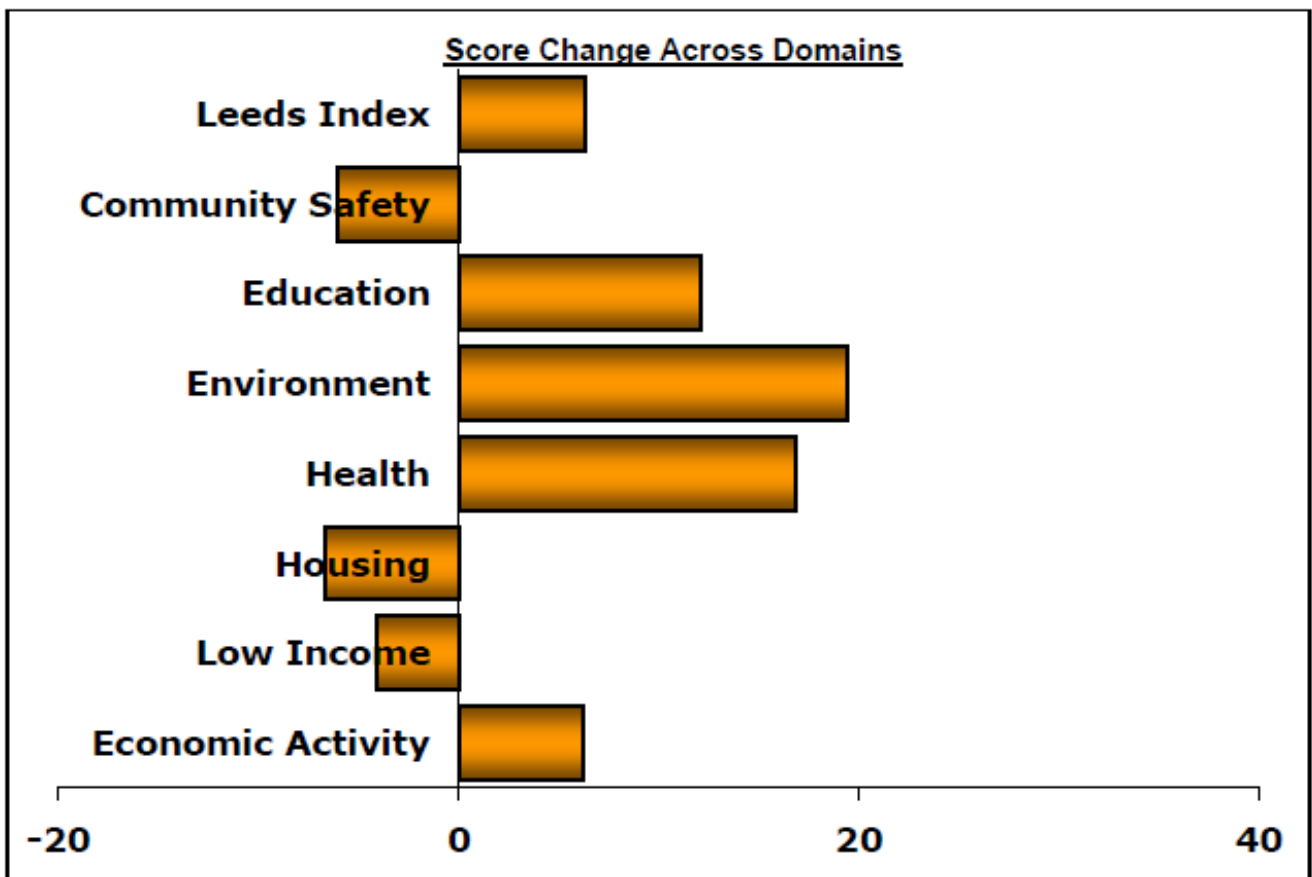
## Appendix 1 – Statistical Analysis

**Table illustrating what the Neighbourhood Index Statistics**

Key Statistics	Profiled Area		Leeds M.D.	
	Number	Rate	Number	Rate
Population 2008 MYE	6,235		770,830	
Households Liable for Council Tax	2,713		324,799	
BME Population	1,272	22.14%	77,482	10.83%
Foundation Stage	48	53.33%	3,980	50.82%
Key Stage 2	34	52.31%	5,319	71.02%
Key Stage 4	20	23.81%	3,505	45.11%
Persistent Absenteeism	52	12.81%	2,952	8.00%
NEET (Nov - Jan Average)	24.67	10.15%	1,512.00	6.79%
Crimes Against the Person	310	N/A	24,276	N/A
Acquisitive Property Crime	314	N/A	44,357	N/A
Environmental Crimes	186	N/A	14,260	N/A
Community Disorders	668	N/A	57,188	N/A
Average Purchase Price	£143,004	N/A	£178,601	N/A
Price / Income Ratio	6.32	N/A	5.21	N/A
Housing Turnover	402	14.36%	49,693	14.81%
Empty Homes (90+ days)	192	6.86%	24,099	7.18%
Children in Workless Households	468	36.62%	25,448	19.15%
Households Receiving In-Work Benefits	203	7.48%	12,386	3.81%
60+ Households In Receipt of Benefits	440	16.22%	33,337	10.26%
Court Payment Orders	336	N/A	25,463	N/A
Job Seekers' Allowance	367	8.74%	24,874	4.90%
Incapacity Benefit	465	11.07%	30,930	6.09%
Lone Parent Income Support	195	4.64%	9,140	1.80%
Circulatory Disease Mortality	N/A	150.26	N/A	85.36
Cancer Mortality	N/A	165.25	N/A	118.33
Low Birthweight	N/A	10.20	N/A	7.90
Adult Social Care	159	N/A	13,671	N/A
Fly Tipping	161	N/A	7,293	N/A
Graffiti	40	N/A	1,698	N/A
Waste Issues	56	N/A	4,417	N/A



Table showing the changes in scores between 2010 and 2011 Neighbourhood Index



DRAFT

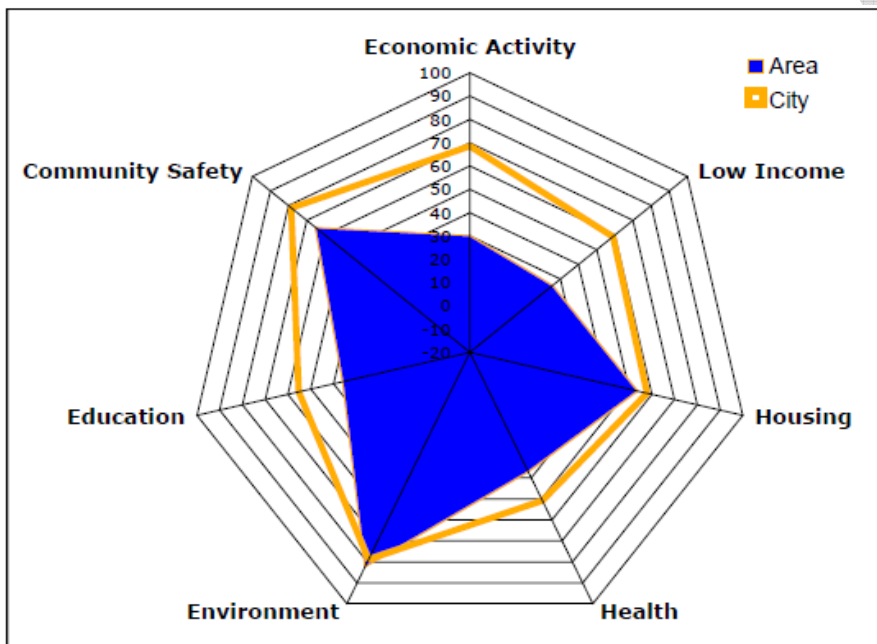
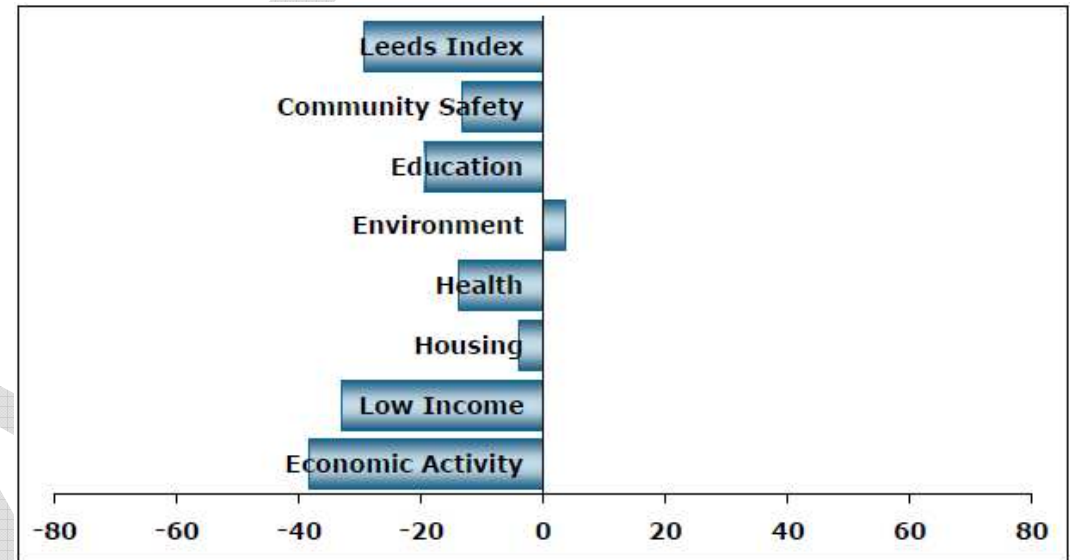
**Table indicating the weighting and explanation of the domain statistics**

***Domain Indicators and Weightings***

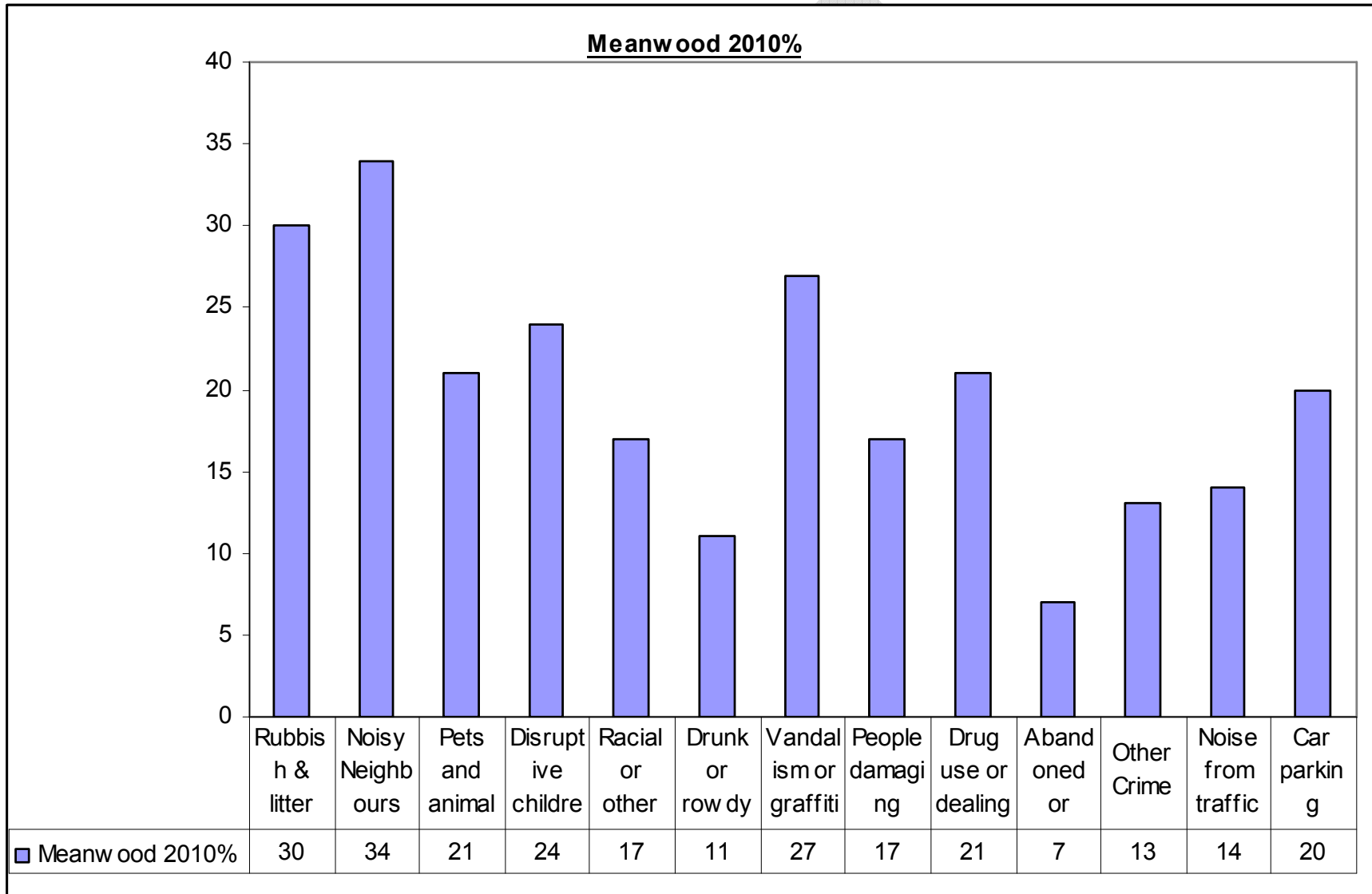
Domain / Indicator	Weighting
<b>Economic Activity</b>	<b>22.5%</b>
% of working age population claiming Job Seekers Allowance	33.3%
% of working age population claiming Incapacity Benefit	33.3%
% of working age population who are Lone Parents claiming Income Support	33.3%
<b>Low Income</b>	<b>22.5%</b>
Number of children in working age households in receipt of IS/JSA and claiming Housing / Council Tax benefit	45%
Number of working age households claiming Housing / Council Tax benefit but not in receipt of Income Support or Job Seekers Allowance	30%
Number of older age households in receipt of Housing / Council Tax benefit	15%
Number of liability orders issued for non-payment of Council Tax	10%
<b>Education</b>	<b>15%</b>
% pupils who are persistent absentees	22.5%
% pupils achieving level 4+ in Key Stage 2 English and Maths	22.5%
% pupils achieving 5 or more GCSEs at grades A*-C, including English and Maths	22.5%
% pupils achieving 78+points plus 6+ in CLL and PSE at Foundation Stage	22.5%
% of school leavers who are NEET	10%
<b>Health</b>	<b>10%</b>
Circulatory Disease Mortality (under 75 years)	33.3%
Cancer Mortality (under 75 years)	33.3%
Low Birthweight	33.3%
<b>Community Safety</b>	<b>10%</b>
Crimes against individuals	25%
Acquisitive Property Crime	25%
Environmental Property Crimes and Disorders	25%
Community Disorders	25%
<b>Environment</b>	<b>10%</b>
Number of Fly Tipping clearance jobs attended by City Services	33.3%
Number of Graffiti clearance jobs attended by City Services	33.3%
Number of services requests received by Health and Environmental Action Services dealing with Waste Issues	33.3%
<b>Housing</b>	<b>10%</b>
Average house purchase price	17.5%
Purchase price to Income Ratio (lowest quartile)	27.5%
Housing turnover (churn)	27.5%
% of properties that have been empty for 90+ days over the course of a year	27.5%

## Graphs illustrating differences between Neighbourhood Scores and Leeds Average

Domain Summary				
2011	Rank	Score	Leeds Score	Diff.
Economic Activity	15	30.14	68.48	-38.33
Low Income	21	25.60	58.74	-33.14
Housing	28	53.77	57.92	-4.15
Health	22	37.07	50.84	-13.77
Environment	31	82.50	78.94	3.56
Education	29	35.84	55.19	-19.35
Community Safety	18	65.16	78.38	-13.22
Leeds Index	23	26.69	56.19	-29.51

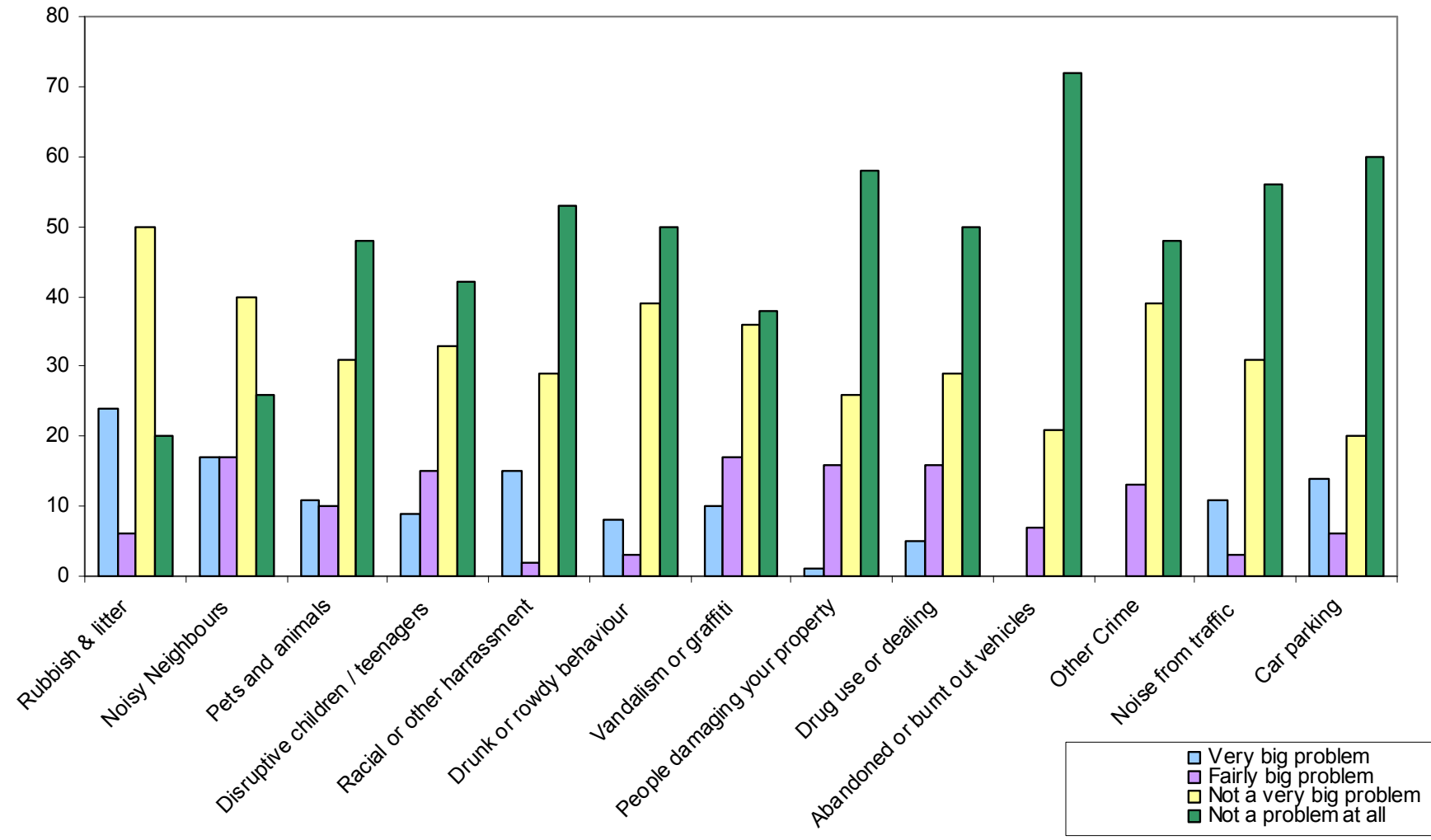


**Summary of Community Perception Survey**





### Meanwood Issues



**Additional Information**  
**Benefit Claimants**

LSOA 's		JSA Claimants		Incapacity Benefit Claimants		Overall WACG Claimants	
		Number	Rate	Number	Rate	Number	Rate
E01011354	Beckhills	115	9.97%	110	9.5%	310	26.89
E01011355	Miles Hills/ Potternewtons	55	5.5%	105	10.5%	230	23.00%
E01011450	Boothroyds/Sugarwells Farmhills	40	3.7%	90	8.33	195	18.06
E01011691	Stonegates	65	6.09	90	8.33%	240	22.47
<b>LEEDS</b>		<b>22,030</b>	<b>4.15%</b>	<b>30,780</b>	<b>5.80%</b>	<b>74,120</b>	<b>13.96%</b>

- The greatest LSOA for JSA claims is the Beckhill estate with a rate of 9.97% and 110 claimants. The lowest is Boothroyds/Sugarwells/Farm Hills with only 3.7%.
- There is a very broad similarity across the whole neighbourhood relating to Incapacity Benefit Claims with all four neighbourhoods having 8.3% - 10.5% and between 90 and 110 claimants.
- For persistent absenteeism the Stonegate estate (691) has the highest rate and number followed by the Boothroyds / Sugarwells and Farmhills (450). The Beckhill estate has the lowest rate.

**Benefit take up and Education Statistics**

LSOA 's		Foundation Stage		Key Stage 2		Key Stage 4 (5+ A-C inc English and Maths)		Persistent Absenteeism	
		Number	Rate	Number	Rate	Number	Rate	Number	Rate
E01011354	Beckhills	13	59.1%	16	76.2%	7	36.8%	7	8.8%
E01011355	Miles Hills/ Potternewtons	15	55.6%	12	75.0%	7	38.9%	7	7.3%
E01011450	Boothroyds/Sugarwells Farmhills	6	50.0%	8	57.1%	6	31.6%	8	12.3%
E01011691	Stonegates	8	57.1%	13	61.9%	8	28.6%	16	19.0%
<b>LEEDS</b>		<b>4,251</b>	<b>52.5%</b>	<b>5,596</b>	<b>73.1%</b>	<b>3,858</b>	<b>50.2%</b>	<b>2838</b>	<b>7.6%</b>

- At Foundation Stage the figures across all the LSOA's are positive, above or within reach of the Leeds average of 52.5% (only the Boothroyds etc is lower on 50.0%)
- At Key Stage 2 attainment the picture is relatively positive with two of the LSOA's being higher than the Leeds average, the lowest and one with the greatest concern is the Boothroyds etc (1450) with a rate of only 57.1%.
- At Key Stage 4 attainment there are concerns with all the LSOA's considerably under the city average, the lowest being the Stonegates at 28.6% the highest being the Miles Hill area (1355) at 38.9%.
- Persistent absenteeism is low in number across all the LSOA's and the rates in 2 of the LSOA's are below the Leeds average (7.6%) or within the immediate vicinity (Beckhills 8.8% and Miles Hills 7.3%). The major concern for this is the Stonegate estate with a rate of 19% and this will be included in work around this over the next twelve months.

### Crime and Disorder Statistics

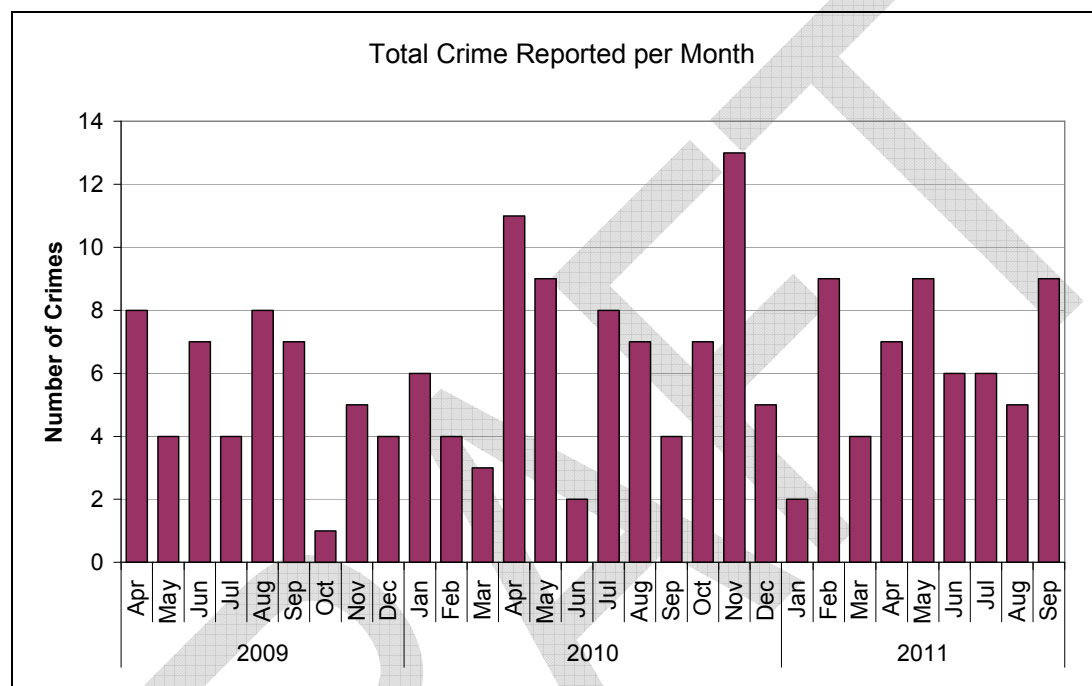
These figures relate to the operation Bowfin area coving the Chapel Allerton part of Meanwood

Occurrence Type	Before Operation	% Change	During Operation	% Change	After Operation	% Change	01/05/11 - 31/10/11
ARSON	0	N/A	1	-100%	0	N/A	1
ASSAULT	13	85%	24	-58%	10	0%	10
BURGLARY DWELLING	29	0%	29	45%	42	-5%	40
BURGLARY OTHER	0	N/A	5	0%	5	40%	7
CRIMINAL DAMAGE - BUILDING NON DWELLING	3	-33%	2	-100%	0	N/A	2
CRIMINAL DAMAGE - DWELLING	14	79%	25	-36%	16	6%	17
CRIMINAL DAMAGE - MOTOR VEHICLE	18	28%	23	-65%	8	13%	9
CRIMINAL DAMAGE - NON SPECIFIC	3	67%	5	-80%	1	0%	1
DRUGS	4	50%	6	17%	7	43%	10
INTERFERENCE WITH M/V	2	-100%	0	N/A	1	300%	4
PUBLIC ORDER	9	-67%	3	233%	10	-80%	2
ROBBERY	5	0%	5	-40%	3	-100%	0
THEFT FROM PERSON	2	50%	3	-100%	0	0%	0
THEFT FROM VEHICLE	4	125%	9	100%	18	-17%	15
THEFT OF VEHICLE	3	-67%	1	-100%	0	N/A	2
TWOC	3	-33%	2	0%	2	-50%	1
<b>Grand Total</b>	<b>112</b>	<b>28%</b>	<b>143</b>	<b>-14%</b>	<b>123</b>	<b>-2%</b>	<b>121</b>

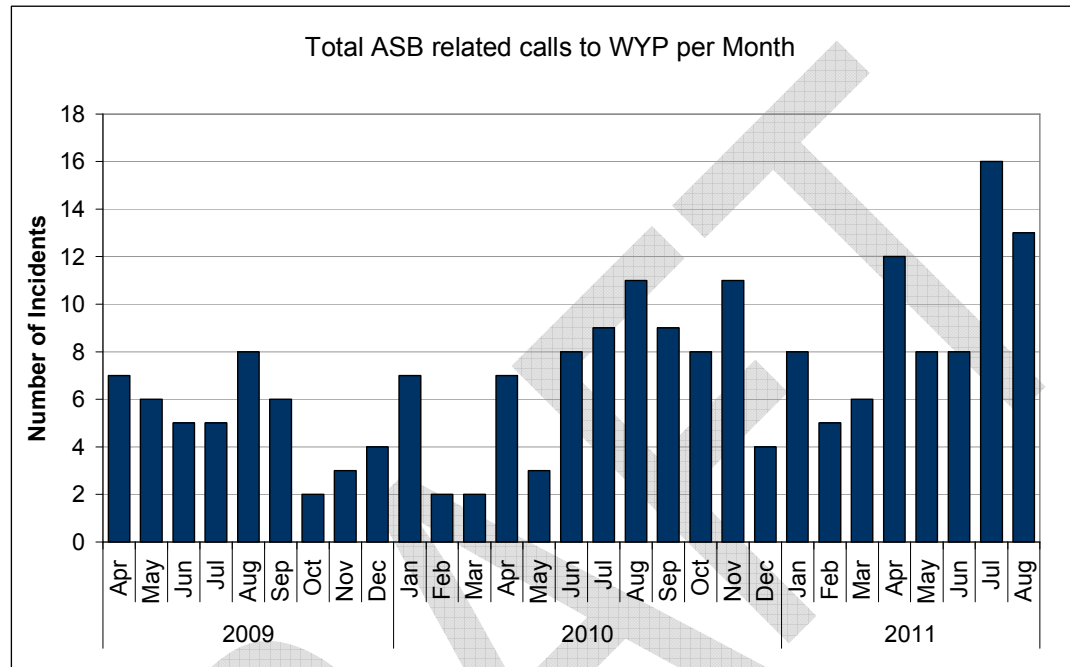
ASB Type	Before Operation	% Change	During Operation	% Change	After Operation	% Change	01/05/11 - 31/10/11
AAMV - NOT STOLEN/OBSTRUCTING	4	-25%	3	-67%	1	100%	2
ALCOHOL	0	0%	0	0%	0	N/A	2
ANIMAL RELATED PROBLEMS	6	-50%	3	-33%	2	0%	2
EMERGENCY SERVICE HOAX	2	150%	5	-40%	3	-67%	1
FIREWORKS/SNOWBALLING	2	150%	5	-60%	2	100%	4
MALICIOUS COMMUNICATIONS	5	60%	8	-50%	4	25%	5
NOISE	0	0%	0	N/A	1	-100%	0
NEIGHBOUR RELATED	3	33%	4	-25%	3	133%	7
NUISANCE CAR / VAN	1	1500%	16	-94%	1	1600%	17
NUISANCE MOTOR CYCLE	5	220%	16	-81%	3	667%	23
ROWDY INCONSIDERATE BEHAVIOUR	37	149%	92	-35%	60	-68%	19
YOUTH RELATED	0	0%	0	0%	0	N/A	2
<b>Grand Total</b>	<b>65</b>	<b>134%</b>	<b>152</b>	<b>-47%</b>	<b>80</b>	<b>5%</b>	<b>84</b>

As can be seen from the above there has been a significant overall reduction in both crime and ASB over the last twelve months with crime reduced a total of 16% overall and ASB reduced by 42% following a 5% rise in the last six months. Crimes of key concern remain burglary dwelling which has seen a slight decrease but is still the highest offence type in the area. Following this, criminal damage through its various classifications remain a concern. From an Anti Social Behaviour perspective the local increases include the summer 2011 when NPT resources were stretched due to issues in other parts of the ward and also the work undertaken has increased reporting from the community through community confidence. Overall this is a positive and confidence with agencies is high that through 2012 the work to tackle these issues will continue to be successful.

## The Stonegates Estate



The chart above indicates a decrease in crimes being committed within the Stonegate estate since 2010 where there was a peak in offending. These figures cover until September 2011 and there is local confidence that the situation will have improved significantly since this time.



The table above indicates an increase in reports of ASB within this locality over 2010 statistics. This could be considered a significant set back however in this instance it can also be a positive as historically reporting in this area has been low and given the decrease in crime statistics, responses from anonymous resident surveys and other anecdotal feedback from residents (notably through the local Childrens Centre) the local partnership are confident that this is positive in this instance and the intention is to continue and improve the work being undertaken within this estate over the next twelve months.

## Demographics

### Ethnicity

Ethnicity Breakdown	Total Persons	Rate (%)
<b>White</b>	<b>4606</b>	<b>89.42</b>
British	4391	85.25
Irish	117	2.27
Other White	98	1.90
Mixed	182	3.53
White & Black Caribbean	105	2.04
White & Black African	17	0.33
White & Asian	34	0.66
Other Mixed	26	0.50
<b>Chinese</b>	<b>39</b>	<b>0.76</b>
<b>Asian or Asian British</b>	<b>143</b>	<b>2.78</b>
Indian	60	1.16
Pakistani	65	1.26
Bangladesh	3	0.06
Other Asian	15	0.29
<b>Black or Black British</b>	<b>164</b>	<b>3.18</b>
Black or Black Caribbean	97	1.88
Black African	42	0.82
Other Black	25	0.49
<b>Other Ethnicity</b>	<b>15</b>	<b>0.29</b>

### Age make up

Age Groups	Total Persons	Rate (%)
0-4 years	306	5.96
5-15	767	14.93
16-19	498	9.69
20-19	1041	20.26
30-59	1723	33.54

60 or over	804	15.65
<b>All Ages</b>	<b>5137</b>	

Religious beliefs

<b>Religions</b>	<b>Total Persons</b>	<b>Rate (%)</b>
Christian	3127	60.97
Buddhist	17	0.33
Hindu	15	0.29
Jewish	20	0.39
Muslim	100	1.95
Sikh	39	0.76
Other religions	26	0.51
No religion	1227	23.92
Not stated	559	10.90



## Appendix 2 –Structure for Team Meanwood

